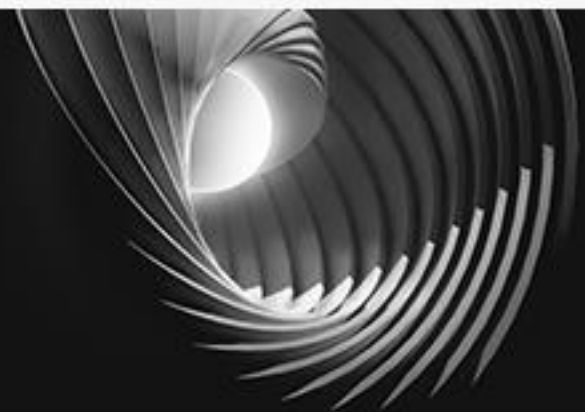




# What's New

in PowerPack for Vault 2023



## Table of contents

<b>1. GENERALITIES VERSION 2023 .....</b>	<b>3</b>
1.1 Email Notification – Offline Job Processor .....	3
1.2 Inventor Data Migration via Job Processor .....	4
1.3 Vault Configuration Report .....	6
1.4 GUI for Configure Jobs .....	10

# 1. Generalities Version 2023

The 2023 version of the **PowerPack for Vault** comes with new features but also improvements on the existing ones:

- Email notification
- Migration of the Inventor files
- Vault Configuration report
- GUI for Custom jobs

The users of Autodesk Vault versions 2022 and 2023 will benefit from these novelties from the **PowerPack for Vault 2023** because this last one can be installed on both versions of the platform.

## 1.1 Email Notification – Offline Job Processor

### Main features & Benefits:

- Best way to know when the Job processor is offline
- Tool created for Vault Admins and key users
- Implementation as a Windows Service on Job Processor Client

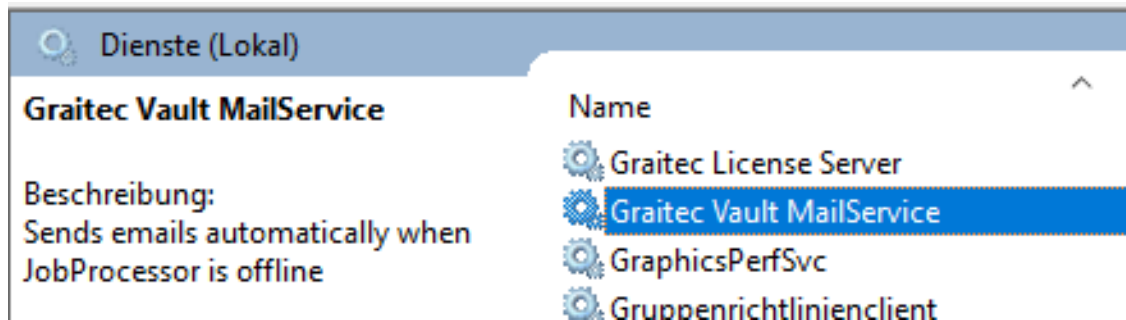
Starting with version 2023, the Email notification when the **Job Processor** is offline is part of the PowerPack for Vault.

The new functionality sends an Email automatically when the Job Processor is offline:

- Vault admins or key users get informed, so the job queue does not run over
- Implements a Windows Service on Job Processor Client

We added a Windows service that will automatically send emails when the Vault Job Processor is offline.

The service will check at regular intervals if the processes *Connectivity.JobProcessor.Delegate.Host.exe* and *JobProcessor.exe* are still running.



The service is configurable using the file:

`c:\ProgramData\Autodesk\ApplicationPlugins\Graitec.VPP.bundle\Contents\2023\Config\MailServiceConfig.xml`

The following settings must be specified:

- `startup` – sets the startup type of the Windows service; available values: `auto|demand|disabled`; default value: `disabled`
- `checkInterval` – sets how often will the service check for the related processes; value in minutes; default value: `60`
- `emailSettings` – sets the smtp server, network credentials, email recipients, and a customized message

The service will update its startup type next time the Job Processor is started. To start the service immediately (`startup = auto`) or stop the service (`startup = disabled`), the Job Processor must be started with administrator permissions. Otherwise, when the system is restarted the service will start/stop.

## 1.2 Inventor Data Migration via Job Processor

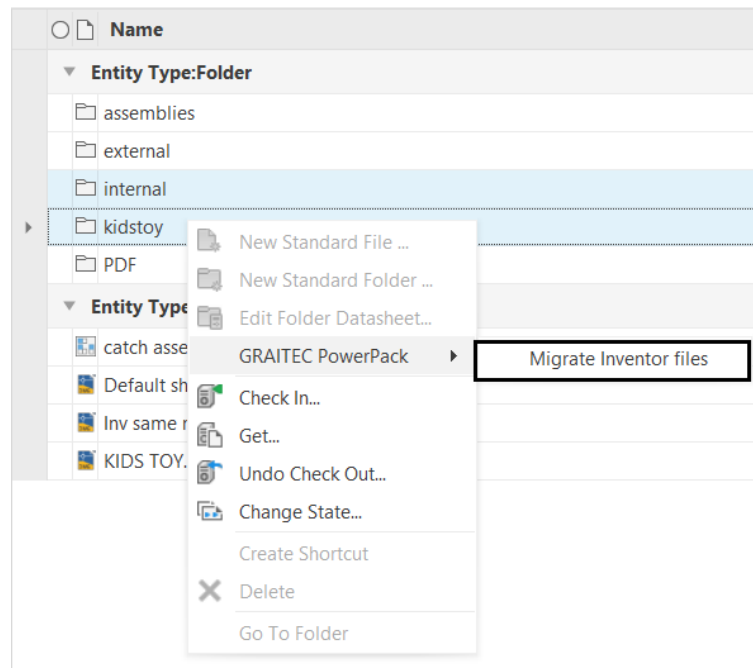
### Main features & Benefits:

- Using the power of the Job Processor, files and folders are migrated
- Stable and performant CAD environment
- Available in the contextual menu, for files and folders
- Possibility to have a multiple selection

Migration of Inventor files is important for a stable and performant CAD environment. The standard Autodesk Task Scheduler might be painful, especially in Vault environments.

That is why, in the latest version of the PowerPack for Vault, additional functions are included, within the context menu for folders and files, to migrate the files using the Job Processor

In the context menu for **folders**, the **Migrate Inventor files** option is available, including the multiple selections of folders.

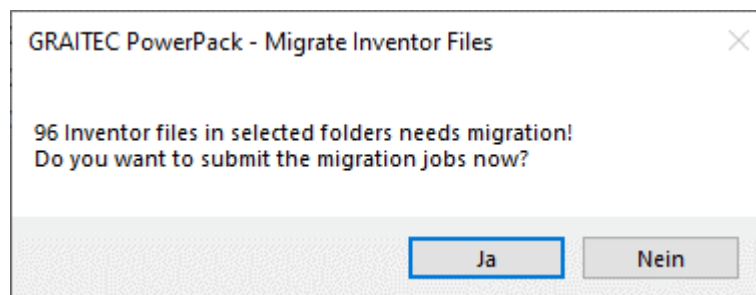


*Migrate Inventor files – folder context menu*

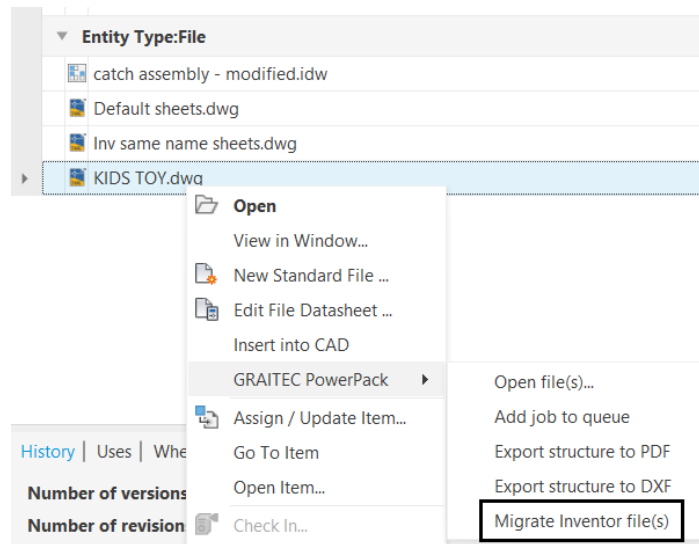
When the function is called, a Vault search inside the selected folders and all subfolders is triggered.

The search uses the file properties Provider and Application Version: Provider is Inventor AND Application Version does not contain <version> (2022).

If the search results in one or more files, the users are asked to submit the migration jobs:

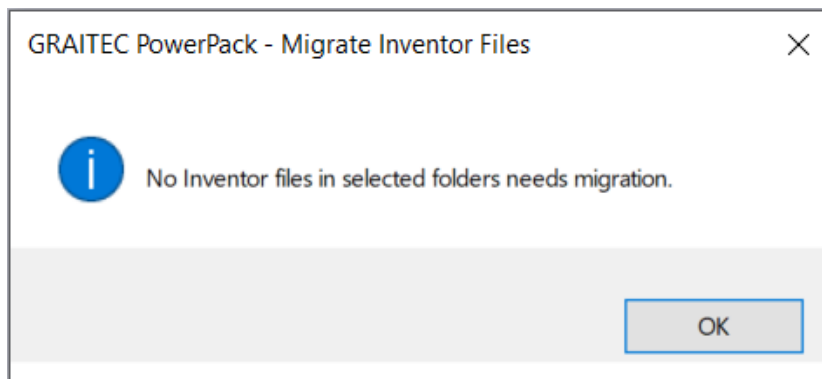


In the context menu for files, the **Migrate Inventor files** option is available, including the multiple selections of files.



*Migrate Inventor files – files context menu*

If there are no unmigrated Inventor files inside the selected folders, the following message appears.



*No unmigrated Inventor files*

### 1.3 Vault Configuration Report

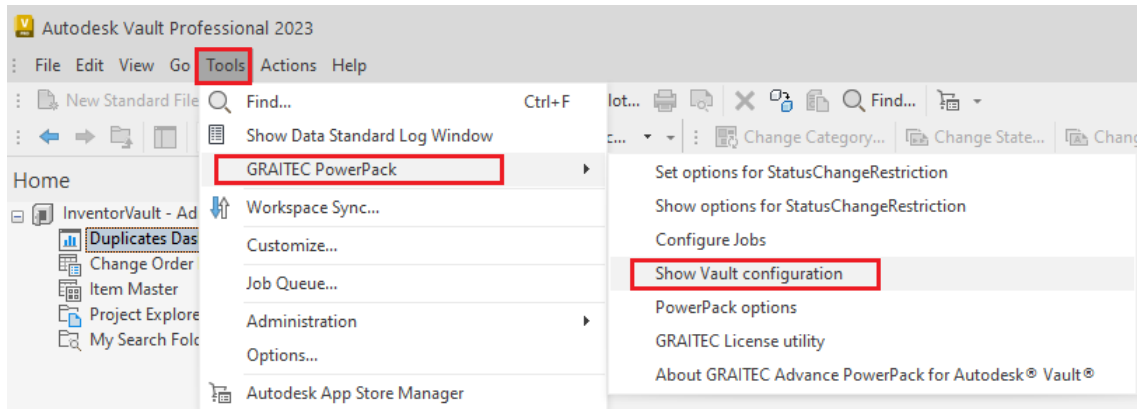
#### Main features & benefits:

- Collect individual settings from many different dialogs
- Extract in no time all the data from the Vault configuration
- Possibility to choose what to include or not in the report
- HTML report which can be sent further for other Vault configurations

The configuration of a particular Vault database can be viewed or edited using the function **Tools > Administration > Vault** settings from the **Vault Explorer**.

The individual settings are distributed in many different dialogs. There is no default function to get an overview of the configuration.

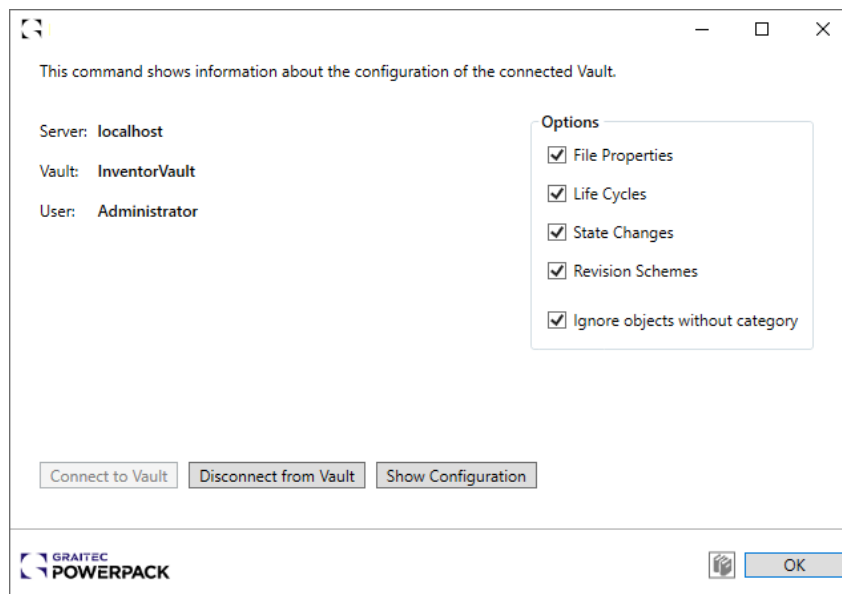
In the 2023 version of the Powerpack for Vault, new functionality has been added, so the **Vault Configuration** is extracted with just one click.



*Show Vault Configuration – context menu*

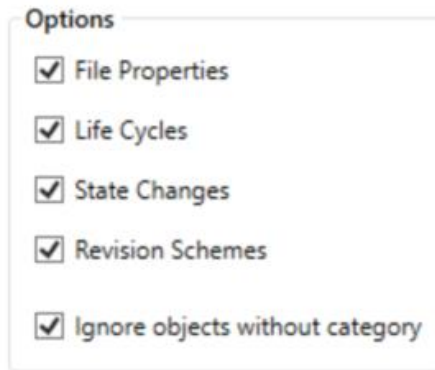
Calling the function, the following dialog appears. To build the **Vault Configuration report**, multiple options are available.

The information from the Vault Configuration is retrieved if the connection to the Vault is established.



*Vault Configuration – dialog and options*

The most essential elements for export are the file-related object as the options in the dialog are showing:



*Vault report options*

The report is built based also on the selected options and the information will be displayed in different tables.

The option **Ignore objects without a category** will eliminate the empty rows in the export tables.

The report is containing general information about the Vault Environment, the property assigned to a specific category will be marked in a table, the same for life cycles and revisions.

Vault Environment	
Server	localhost
Vault	InventorVault
User	Adriana
Date	15.04.2022
Time	11:55:40

*Vault environment*

The table for **State Changes** should show the name of the states and the possible transitions for the connected vault user. If the user has the right to perform the specific transition, this should be marked in the table.



Basic Release Process - User: Adriana				
	Work in Progress	For Review	Released	Obsolete
Work in Progress	-	X		
For Review	X	-	X	
Released	X		-	X
Obsolete				

*Example of a table for State Changes*

Clicking the button **Show Configuration** will open the report in HTML format:

Vault Environment					
Server	localhost				
Vault	InventorVault				
User	Adriana				
Date	15.04.2022				
Time	11:55:40				

User Defined Properties (files)					
	Base	Engineering	Office	Standard	Design Representation
Application Version	X	X		X	
Author	X	X	X	X	X
Checked By		X			
Comments	X	X	X	X	
Company	X	X		X	
Cost	X	X		X	
Description	X	X		X	
Designer	X	X		X	
DWG Type	X	X		X	
Engineer	X	X		X	
Engr Approved By	X	X	X	X	X
Keywords	X	X	X	X	X
Manager	X	X		X	
Material	X	X		X	
Mfg Approved By	X	X		X	
Part Number	X	X		X	

*HTML Report*

### 1.4 GUI for Configure Jobs

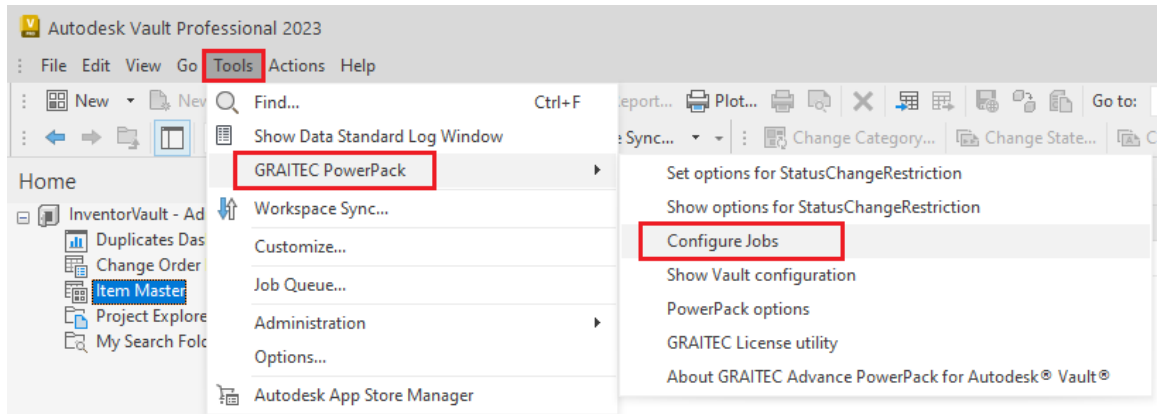
This new command will allow the user to configure the jobs directly from the Vault Explorer by providing a **GUI**, instead of editing directly the two XML files (Export.Config.xml & InventorConvert.xml).

#### Main features & Benefits:

- Easy configuration via GUI
- Multiple options gathered in one dialog
- Tabs for each individual stage of the job configuration process
- User friendly and easy access
- Individual tabs with all necessary details for configuration

*OLD - configuration in XML files*

The new dialog to configure jobs is available under **Tools -> GRAITEC PowerPack -> Configure Jobs**.



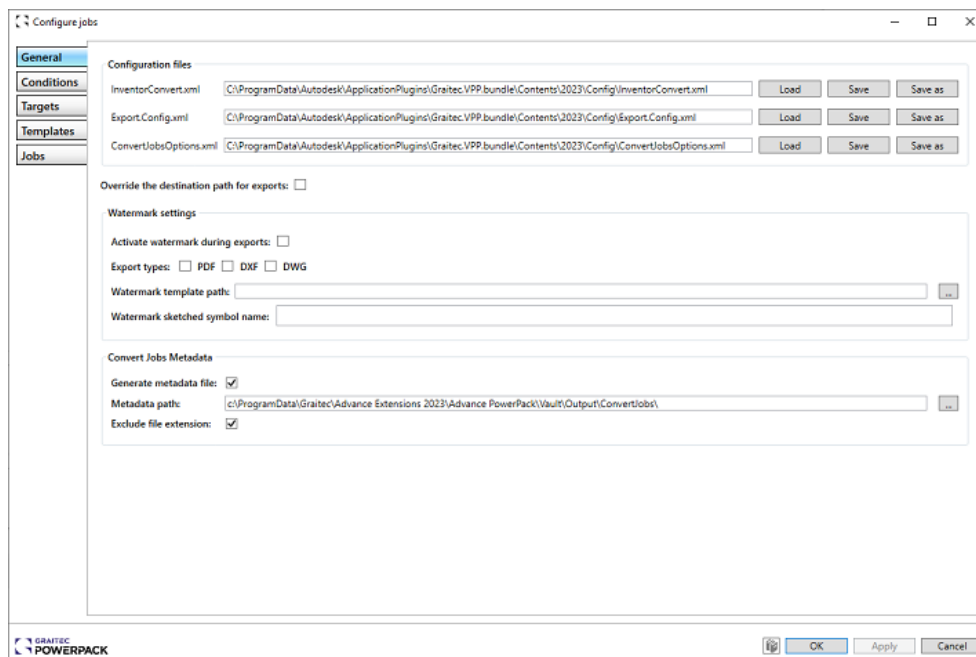
*NEW – configuration via dialog*

To use the command, the user must have the **VaultSetOptions** permission and access to the **XML files** on the server that hosts the Job Processor.

The elements have set visibility based on the previous element in the tree and might not be visible to prevent invalid combinations. The elements implemented are the following: match pattern, uppercase, lowercase, file name, extension, file name without extension, export extension, property, vault file path, replace, text, paragraph, logical and logical or, logical equality, logical not, true, false.

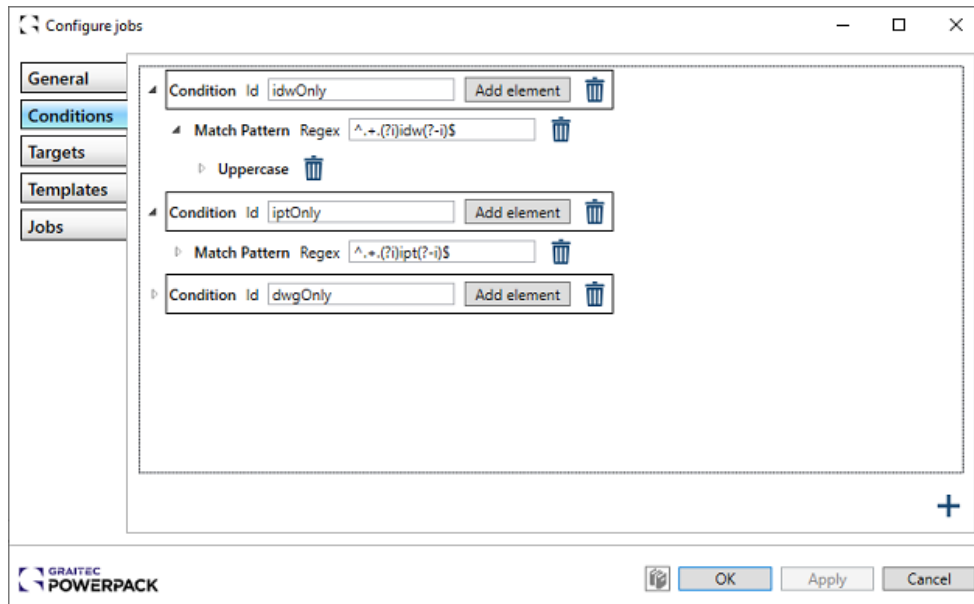
### 1.4.1 General Tab

In the **General** tab, the configuration files can be loaded or saved. The configuration files are automatically loaded from the bundle folder on the current computer. Also, the **Export** tab from the PowerPack options has been moved here, including the option to override the destination path of all exports and the watermark settings.



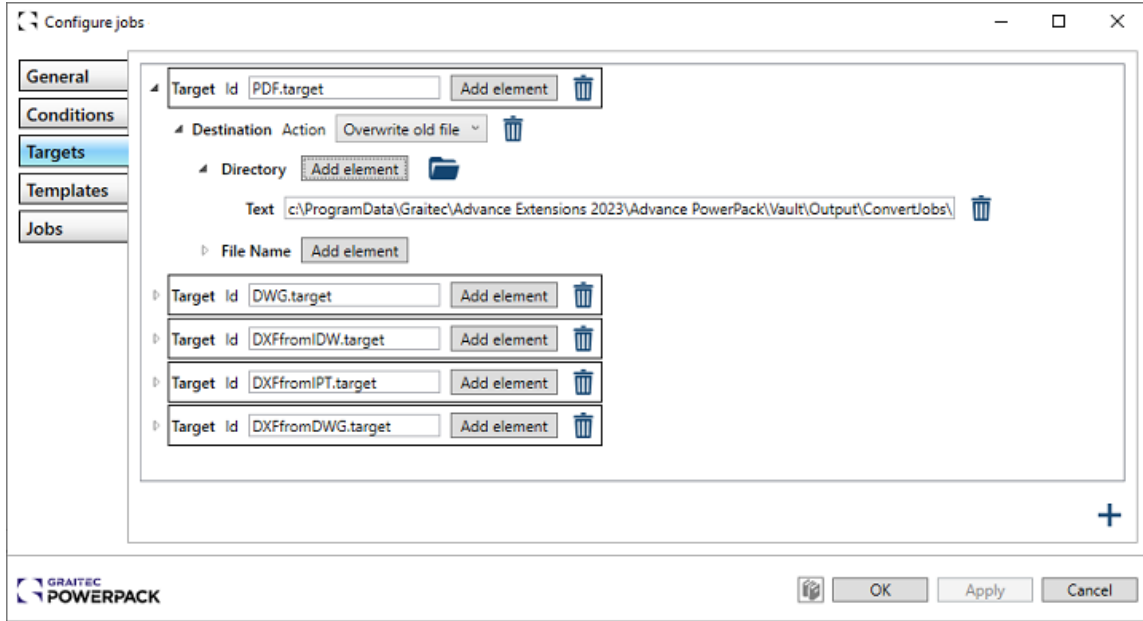
*General Tab***1.4.2 Conditions Tab**

In this tab, the user can customize the *condition templates* from the Export.Config.xml. The conditions contain most of the time only a regex pattern to check the file name, however it allows multiple patterns with the use of *Logical and* or *Logical or* elements.

*Conditions Tab***1.4.3 Targets Tab**

In this tab, the user can customize the *target templates* from Export.Config.xml. Each target consists of one or more export plugins which represent procedures that execute when a file is exported. The currently available plugins are:

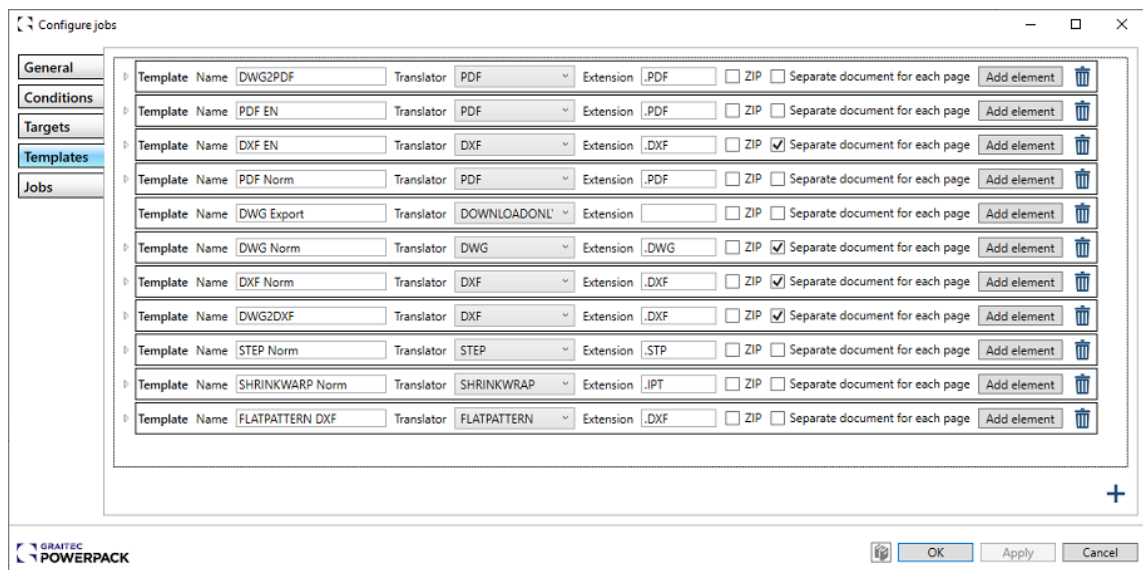
- Destination - Copies the output file in the selected folder with a customized name;
- Send email - Send an email that a file has been exported and optionally the output file as zip attachment;
- Add to vault - Adds the output file in the Vault in the selected location with a customized name or adds it as an attachment to the original file in the Vault;
- Delete file - Deletes a certain file on the disk. It also supports wildcards to remove multiple files that match a condition and also recursive search on child folders;
- Start process - Starts the selected process with the provided arguments.



Targets Tab

### 1.4.4 Templates Tab

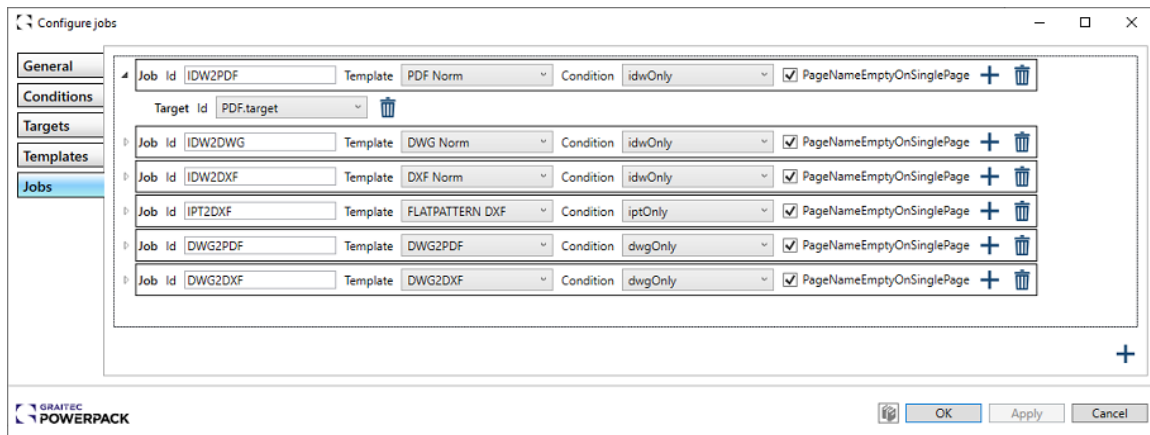
In this tab, the user can customize the *templates* from *InventorConvert.xml*. Each template must use a defined Inventor Translator and might contain properties that are passed to it. The properties can be boolean, string, integer, double, or enum.



*Templates Tab*

**1.4.5 Jobs Tab**

In this tab, the user can customize the *convert* elements from Export.Config.xml, which represent each individual job. Every job must have a condition, a template, and at least one target in order to be added and correctly processed.



*Jobs Tab*